

Boyer Hall Facilities News

Volume 1, Issue 4

<http://www.mbi.ucla.edu>

April 2007

Pipe Repair



On April 25th -26th around the hour of midnight, water was seen coming from the roof on the east side of Boyer Hall. It was the electricians that first spotted the leak and summoned the plumbers, the custodians soon followed and the clean-up was in full swing. Crews worked all night and into the next day, drying floors, vacuuming water, and replacing damaged ceiling tiles. Humidity levels were checked and rechecked, dehumidifiers and blowers were brought in and placed strategically to expedite the removal of residual humidity. The damage was primarily on floors four, five, and six, with the fifth and fourth floors being the most impacted.

Although the total damage is yet undetermined, it appears that early detection, and significant water diversion outside the building served to mitigate more extensive damage. However, the impact of these incidents on our resident investigators, students and staff is a serious matter. Boyer Hall Faculty and Staff as well as Assistant Dean- Lianna Anderson recently met with senior representatives of UCLA's Facilities Group to establish effective long-term strategies that will prevent these occurrences in the future. We will be replacing fire caulk, conducting a comprehensive pipe inspection and have initially received some positive indications that we are in line for replacement of some HVAC system components that have reached the end of their useful life. We will be following up on these issues with more to report in June.

INSIDE THIS ISSUE

1	Pipe Repair
2	Bike Racks/Floor Care/Back-up Freezers
3	Campus Safety
4	Workplace Injuries
5	Monthly Events/Did You Know



Back-up Freezers

Many of you have used our back-up freezer program to store your -80 freezer contents while your freezer is repaired or replaced. We welcome your participation in the back-up program, but want to remind you that these freezers are not on emergency power. This means that a long-term power failure will directly impact the contents. Additionally, we check these freezers once a day, but encourage you to do the same as well. We recently had one of our -80 back-up freezers (belonging to MIMG) lose temperature, and we needed to empty it. We want to thank all of those labs that recently consolidated their materials into smaller spaces so we could continue to accommodate everyone.

Please remember that all of the shelves that your lab occupies **MUST** be clearly labeled with the name of the lab. This should be done on cardboard signage and placed on every shelf. In the event of a power failure or mechanical problem, unmarked shelves create delays in transferring the contents and notifying the lab.

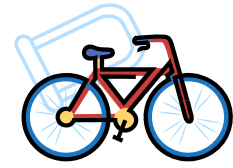
Your Cooperation Is Appreciated !



Floor Care Progress

We made additional progress on the floors that were impacted by the 2006 water damage, as we mopped, stripped, and waxed approximately 2400 square feet of space in the months of April and May. We are working on an additional square feet covered by the 2006 insurance settlement and have completed the Clubb, Eisenberg, Morrison, and Lee labs, with more to follow.

Bike



Racks

Many of you have expressed an interest in additional indoor parking for bikes. It is still uncertain whether we will be able to accommodate those requests. There are a number of issues to be considered e.g. fire and life safety, the building's aesthetic presentation and expense.

We will continue to look at the possibility of more bicycle storage inside the building. In the interim, we are currently in the process of adding bike racks outside on Boyer Hall's east side. We removed the aging trash compactor, and will be relocating an existing bike rack to this more visible location.

Many of you expressed concerns that bikes are frequently stolen from outside locations. We spoke to the UC Police and found that 88 bicycles were stolen last year. They expressed that they had apprehended one major culprit and that seemed to be reducing the numbers going forward. The number of thefts is on the low side, considering the overall population at UCLA.

Additionally, a well secured bike is not an easy target. The investment in a high-security bike lock is a sound one. Bike locks that are now available can consist of hardened steel (immune to bolt cutters) and locking mechanisms that are nearly impossible to pick. We have two of them that were left on the building's patio railing (Don't park here please!) that will need to be removed by UCLA sheet metal workers.



Campus Safety

The recent violence on the campus of Virginia Tech shocked the nation and made all of us think about campus safety as it relates to us as individuals. Please see the UCPD link below to access information on UCLA preparedness and for guidelines/recommendations/tips on how to respond during an actual incident. The Chancellor's site also offers some valuable links for resources and information.

<http://www.ucpd.ucla.edu/>

<http://www.ucla.edu/chancellor/statement-campus-safety.html>

Please read the information below- Programming the UCLA Police phone number into your cell phone is one of the single most important things you can do to be prepared.

(The following is an excerpt from the UCLA PD website)

Be Prepared For An EMERGENCY

**For the fastest response for emergencies on and around campus:
Program your cell phone with the UCLA Police Department's
24-hour a day Dispatch number,
(310) 825-1491**

- ★ UCLA community members dialing 9-1-1 on their cell phone will be put through to the California Highway Patrol. Valuable time will be spent having to tell them where you are located, describing the emergency and waiting for them to contact the local police authority.
- ★ Dialing 9-1-1 from campus phones reaches the UCLA Emergency 9-1-1 Operators for the fastest response.
- ★ Programming the UCPD Dispatch number into your cell phone will enable you to directly contact the UCLA 9-1-1 Operators saving valuable time in an emergency and insuring a quick response.
- ★ Immediately tell Dispatch that you have an emergency and are on a cell phone when calling.
- ★ **Prepare yourself for emergencies by programming the UCLA Police Department Dispatch phone number (310) 825-1491 into your cell phone!**

JOIN THE CAMPUS SAFETY EMAIL LISTSERV!

The UCLA Police Department offers electronic bulletins to students, faculty, parents, and staff at UCLA who would like the most up-to-date information about safety and crime prevention on the campus. You will receive periodic updates of recent crimes, crime trends, and public safety information. To join, please visit: www.ucpd.ucla.edu and click on "Listserv".

Workplace Injuries-



Sometimes accidents occur in spite of our best efforts. Fortunately workplace injuries are a fairly rare occurrence, but because they are, there are frequently questions on what you need to do.

WHEN THERE IS A WORKERS' COMPENSATION INJURY

Get the Injured Employee Medical Attention

OHF at 200 UCLA Medical Plaza, Suite 224
7:30 AM to 4:30 PM Monday – Friday
After OHF Hours use Emergency Medicine Center/EMC
B Level in the Center for the Health Sciences.

Severe injuries call 911*

* Severe injuries and/or hospitalized overnight require an immediate call to Environment Health and Safety 310-825 5689

The forms cited below should be available from your home department's Human Resources Representative.

Complete for OHF: "Employee's Referral Slip for Industrial Injury and Report of Accident"

Fill out the top two sections.

Send it with the Employee to OHF.

The Doctor will fill out the bottom section.

The Employee should bring back a completed copy to your department's Human Resources.

Give Employee:

Workers' Compensation Claim Form DWC 1

Notice of Potential Eligibility

When an Injury Occurs pamphlet

Note: This form must be provided within 24 hours of receipt of notice that an injury or illness has occurred as mandated by California State Law. (Exception First Aid incidents)

To complete the " **Workers' Compensation Claim Form DWC 1**":

Supervisor completes the bottom [section 9](#) through [17](#) and [signs the form](#).

The employee fills out the top section.

Supervisor gives the Employee a completed-signed copy.

Supervisor keeps a copy of the completed form for section records and delivers a copy to your department's Human Resources the same day.

FAX a copy to OIRM 310 794-6957 **within 24 hours of the injury**

OIRM Administrative Assistant

Polly Benninghoff

310 794-6948

Workers' Comp Coordinator

Ron Garduno

310 794-6952

Workers' Comp Manager

Judith Parrish

310 794-6954

APRIL/MAY EVENTS

UCLA CAMPUS HOLIDAY
MAY 28TH MEMORIAL DAY HOLIDAY

MBI LAB MANAGER MEETING

PLACE: MBI- ROOM # 130

DATE: MAY 25TH 2007

TIME: 9:30

LIGHT REFRESHMENTS

BOYER DOCK HOURS

PLACE: BOYER DOCK

DATE: MONDAY – FRIDAY

TIME: 7:00AM 4:00PM

CHEMICAL WASTE PICK-UP

PLACE: BOYER DOCK

DATE: EVERY THURSDAY

TIME: 2:45- 3:20 PM

RADIOACTIVE WASTE PICK-UP

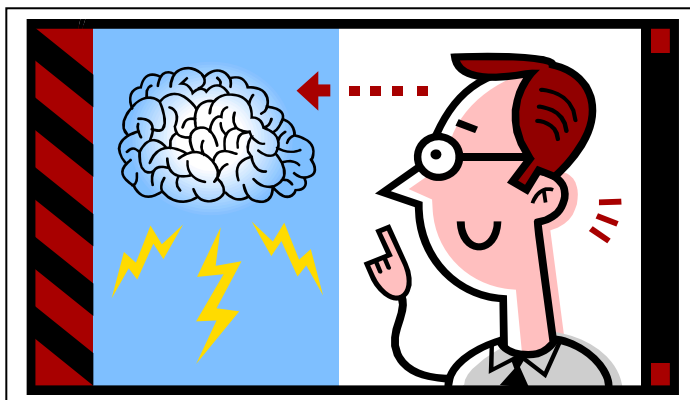
PLACE: BOYER DOCK

DATE: EVERY WEDNESDAY

TIME: 9:00 -9:30AM

May 2007

Su	M	Tu	W	Th	Fri	Sa
		1	2	3	4	5
6	7	8	9	10	11	12
13	14	15	16	17	18	19
20	21	22	23	24	25	26
27	28	29	30	31		



DID YOU KNOW

- That this newsletter is for April and May, the April Issue was delayed as a result of the broken pipe, and the need to shift resources to the repair and clean-up.
- That we are currently working on purchasing a new film processor.
- That we are looking for a new location for the film processor. (The current room is low on the popularity list).
- That we recently bought a new video projector to support the conference room (#159). No more standing on the table with the remote saying "pretty please!"
- That soon we will be issuing a comprehensive communication regarding lab upgrades and equipment purchasing timelines.
- That a new equipment purchase checklist should be available (through the Building Manager) by request this July 1st. This checklist will aid you in the purchase of equipment by identifying all of the things that need to be considered e.g. voltage, ventilation, inside delivery, dimensions of our elevator and more.
- That the landscape repair is now underway at the south end of the building.
- That the next Lab Representative Meeting will include valuable information on future projects.

Be There!